



***PiVFS Manager for MemPlug™  
Springboard™ Module***

***User Manual***

## Requirements

1. Handspring™ Visor handheld computer devices (Visor Solo, Deluxe, Platinum, Prism, or Edge)
2. MemPlug SmartMedia™ or MemPlug CompactFlash™ Springboard Module. (Software version 1.62 or higher)
3. MemPlug compatible removable memory card (SmartMedia or CompactFlash)

## Installation

(If your module's software version is already 1.62 or above, you can skip step 1-8)

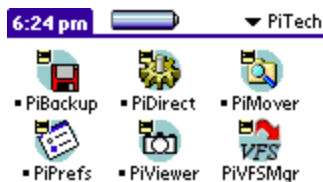
1. Download the latest software update of MemPlug from [www.memplug.com](http://www.memplug.com)
2. HotSync or using PiMover to copy the Updater (1.62 or above) to Visor internal memory
3. You shall see a new applications: "SM Updater" / "CF Updater"
4. Run "SM Updater" / "CF Updater"
5. Click button "Update Now", then "OK"
6. After "Running Flash Updater", a "Reset" message pop up. Click "Reset"
7. Your module shall be updated.
8. You may now remove the "Updater" application from your Visor.

Warning:

- Turn off all hackMaster applications and overclock application before update

Note:

You can have more details instruction on how to update and how to handle fatal error during update from our website <http://www.memplug.com/MyUpdate.htm>



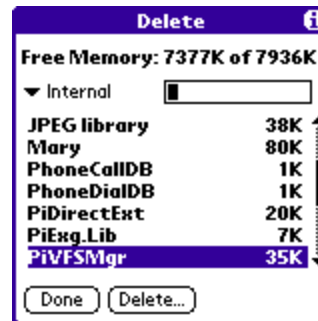
9. HotSync or using PiMover to copy "PiVFSMgr.prc" to Visor internal memory
10. You shall see the "PiVFSMgr" application, and the installation is completed



11. You can tap menu bar -> Tap **About PiVFSMgr Manager**. You can find out the version of PiVFSMgr

## Un-install

1. Invoke PiVFSMgr application, tap the "Disable" button, and then quit PiVFSMgr
2. You can now tap Menu->Delete... at the Palm launcher, and then choose PiVFSMgr to delete



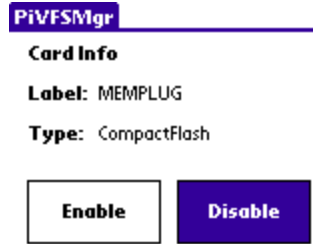
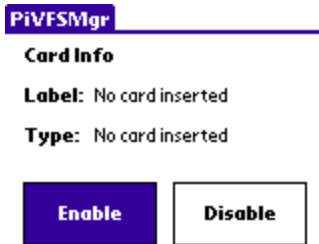
## Product Features

Allow VFS-supported applications to run on Visor handheld devices just like they are running on Palm™ m50x series, Sony™ CLIE™, Handera™ etc. with removable memory card slot.

## Operating Instructions

1. Tap to launch "PiVFSMgr"
2. There are 2 buttons: Enable or Disable PiVFS Manager

- "Card Info" shows you the status of external memory card
- "Label" indicates the card's volume label if a memory card is inserted

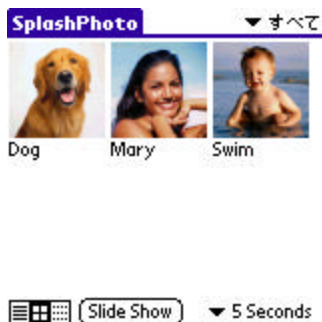


- "Type" indicates which module/memory card type you are using
- To enable PiVFSMgr, just tap the **Enable** icon and quit
- You can try to run those software with VFS support now

### Example (SplashPhoto)

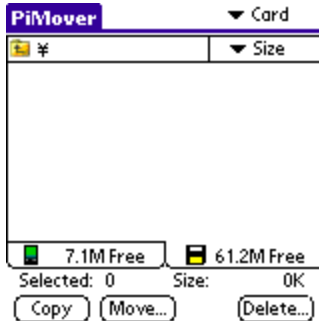


- First, you install the SplashPhoto by HotSync or PiMover

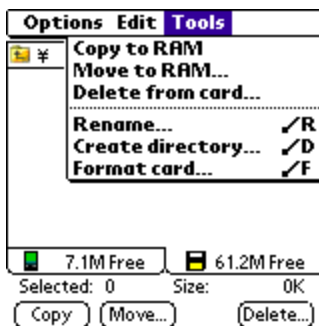


- Tap the SplashPhoto icon to enter the application. You can view 3 images which are stored in the visor internal RAM.

3. Tap the PiMover icon to enter the application.

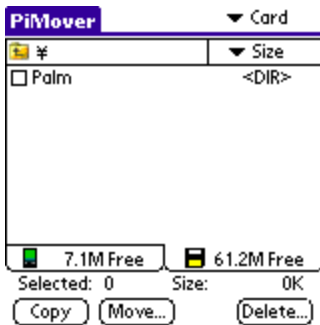


4. Tap the menu bar -> Tap Tools -> Tap Create directory

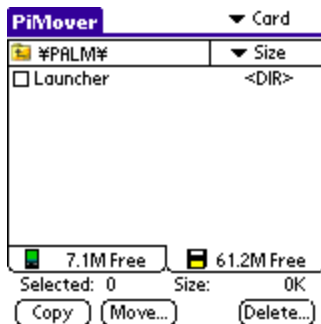


5. Enter the directory name Palm

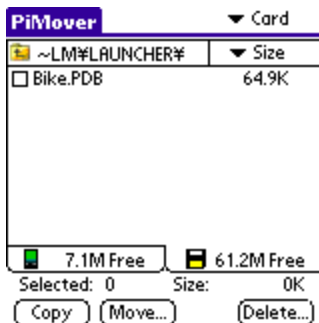




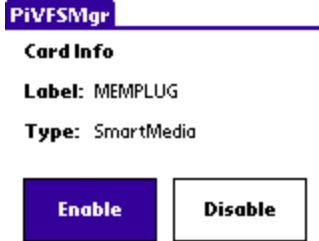
6. New directory /Palm/ is created



7. Tap on the directory and repeat the Step 4 ? 5. You now have the directory /Palm/Launcher/



8. You can move the image PDB file from RAM or card reader. For this example, we use the a new image Bike.PDB. We first go into /Palm/Launcher/ directory of the memory card -> Switch to card tap -> Tap the file Bike.PDB -> Tap **Move...** The image will be moved to /Palm/Launcher/ directory. This is the default directory for SplashPhoto. ***Other applications may have different default directory. Please consult the corresponding user guides.***



9. Quit the PiMover, tap on PiVFSMgr icon and the **Enable** button.



10. Go to SplashPhoto again. You can view the image in the memory card. Those image on the external memory card will have a small file icon next to the image name.

## Remarks

1. PiVFS Manager will be disabled after reset. You will need to enable it again after reset. This is because we want to prevent reset dead loop in case a crash occurs.
2. Even there is no MemPlug, you can still enable the PiVFSMgr. Since some applications won't check the card present, it may cause crash in your visor.
3. There is no default directory for PiVFSMgr. You need to read the instruction or manual of the VFS-enabled software.

## ***Online Resources***

### ***FAQ web site***

[www.memplug.com/faq.html](http://www.memplug.com/faq.html)

### ***User Guide web site***

[www.memplug.com/tmp/prodinfo/pivfs.htm](http://www.memplug.com/tmp/prodinfo/pivfs.htm)

### ***Software download***

[www.memplug.com/downloads.htm](http://www.memplug.com/downloads.htm)

### ***Discussion forum***

[groups.yahoo.com/group/memplug](http://groups.yahoo.com/group/memplug)

### ***Product Support Email***

Email: [support@pitech.com](mailto:support@pitech.com)