

eyemoduleTM2

Digital Camera for the HandspringTM VisorTM handheld




springboard
COMPATIBLE[™]

TM
design
by
IDEO



Introduction.....	1
Getting Started	2
Icons and Buttons	4
Capturing Images	6
Capturing Mini-Movies	8
Setting the Capture Timer	9
View Mode	12
Thumbnail Mode.....	16



List Mode.....	17
Beaming Images	18
Bringing Images to Your Computer.....	20
Setting Preferences	22
Viewing Images and Mini-Movies on Your Computer.....	23
Bringing Images to Your Visor Handheld.....	24
Specifications.....	25
Tips and Troubleshooting	26
Warranty	27

introduction

The eyemodule™2 digital camera turns any one of the Handspring™ Visor™ handhelds into a convenient image capture device.

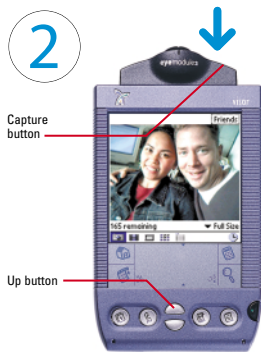
Insert the eyemodule2 digital camera into the Springboard™ expansion slot and you're ready to capture and view images and Mini-Movies, label them, and beam them to other compatible PalmOS® devices. Install the included conduit software, and you can e-mail and print your eyemodule2 images from your computer. It's fast and simple.



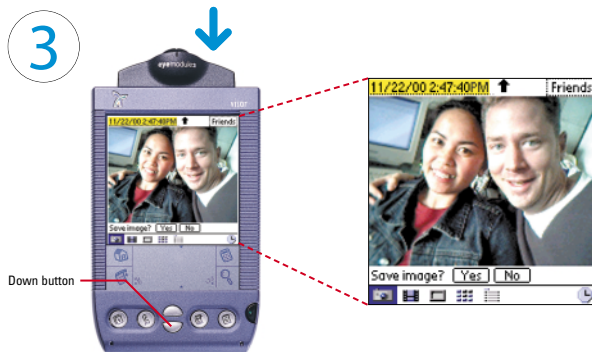
getting started



Insert the eyemodule2 digital camera into the Springboard expansion slot. After a brief introductory screen, your handheld will display a live image.

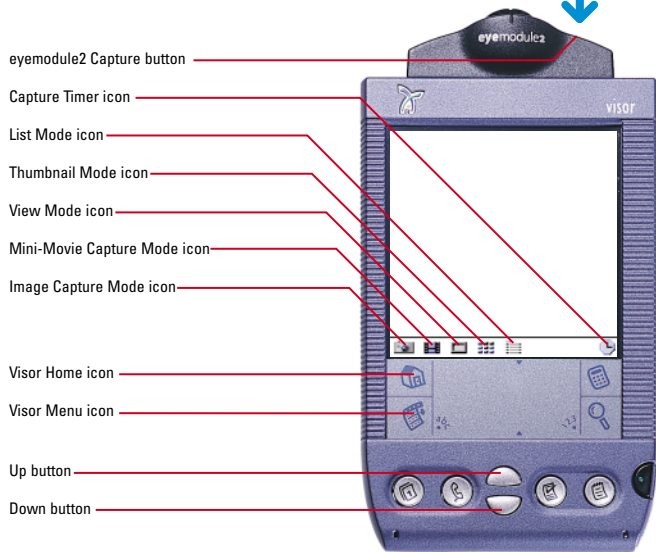


To freeze the image, press once on the Capture button next to the lens. (You may also press the Up button on the Visor handheld to perform the same function.)



If you want to save the frozen image, press the Capture button, tap **Yes**, or press the Up button. If you don't want to save it, tap **No** or press the Down button. Your handheld will again display a live image.

icons and buttons

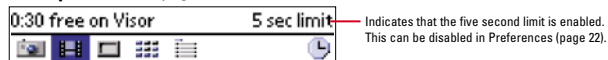


menu bar icons

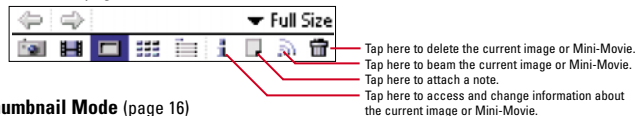
Image Capture Mode (page 6)



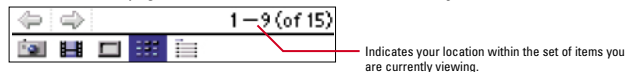
Movie Capture Mode (page 8)



View Mode (page 12)



Thumbnail Mode (page 16)



List Mode (page 17)



capturing images

When the Capture Mode icon (📷) is selected, you are ready to capture images.

Press here to capture an image.

Tap here to select the category into which your images will be saved.

Tap here to change the size of the image being saved:

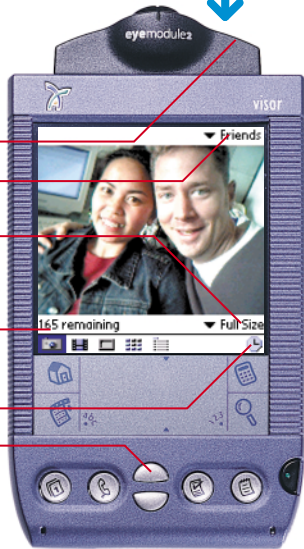
Palm Size = 160x120 pixels

Full Size = 640x480 pixels (full VGA)

This area displays the approximate number of images that can be saved at the current image size setting.

Tap here to set the Capture Timer (page 10).

You may also press the Up button to capture an image.



Tap here to select the category into which your image will be saved.

Images are automatically named with the date and time. A custom name can be entered via Graffiti® before saving the image. The name can also be changed later in View Mode or in the Image Info screen.

Tap or press the Up button to save the image.

Tap or press the Down button to discard the image and return to the live preview.

Note: If you switch modes without saving the image, the image will be discarded.



capturing mini-movies

In Movie Capture Mode (📽️), you can record short movies on your Visor handheld. You can then view them in View Mode or bring them to your computer as QuickTime™ movies.

Press the capture button to start and stop filming.

Tap here to select the category into which the Mini-Movie will be saved.

The current maximum Mini-Movie length is indicated here, based on the remaining memory.

The five second limit can be removed by tapping the Visor Menu icon, selecting "Preferences" from the Options menu, and then unchecking the "Limit Filming to 5 seconds" option.

Tap here to set the Capture Timer (page 11).

Alternatively, you can start and stop filming by pressing the Up button. Pressing the Down button cancels filming.

Note: Mini-Movie capture consumes a lot of memory. Keep your movies short to save memory space.



After the Mini-Movie has been captured, it is played back in a continuous loop on the screen until it is either saved or discarded.

Mini-Movies are automatically named with the date and time. A custom name can be entered via Graffiti before saving the Mini-Movie. The name can also be changed later in View Mode or in the Image Info screen.

Tap here to select the category into which the Mini-Movie will be saved.

Tap **Yes** or press the Up button to save the Mini-Movie and return to the live preview.

Tap **No** or press the Down button to discard the Mini-Movie.

Note: Only a color Handspring handheld will capture color Mini-Movies. B&W Visor handhelds can only capture B&W Mini-Movies.



setting the capture timer

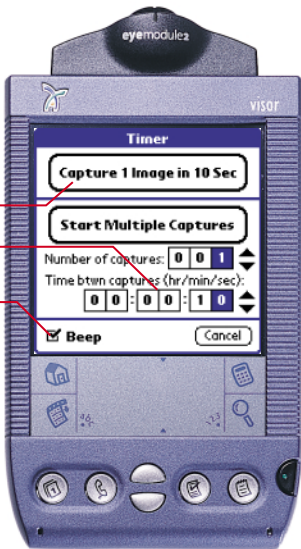
When in Image Capture Mode, you can open the Timer screen by tapping the Capture Timer icon (🕒). You then have the option of having a simple 10 second delay or doing multiple timed captures.

Tap here to capture one image after a 10 second pause.

Change these numbers to set up your own image-capture sequence.

Tap here to enable or disable the capture beeps.

Note: The Timer will turn the Visor handheld back on to perform each capture if the time between captures exceeds Visor auto-off time. If your Visor handheld runs out of memory during the sequence, it will stop capturing images.



In Movie Capture Mode, the Capture Timer can be used to start filming after a certain amount of time has elapsed.

Change this number to set the delay time before filming begins.

Filming will stop if any of the following happens:

- Pressing the Capture button.
- Pressing the Up button
- Pressing the Down button (cancels filming)
- Five second limit is reached (if limit is on)
- Memory becomes full

Note: The Mini-Movie Capture Timer is not able to capture multiple Mini-Movies.



view mode

When the View Mode icon is selected, you will be able to view saved images and Mini-Movies.

images

Tap here to attach a note to the image.

Tap the Info icon to open the Image Info screen (page 15).

Tap here to go to the previous or next image or Mini-Movie.

Tap the Beam icon to beam the current image to another compatible PalmOS® device (page 18).

Tap the Delete icon to delete the current item.

You can also press the Up or Down buttons to view the previous or next image or Mini-Movie.



mini-movies

You can edit the Mini-Movie name and category directly from View Mode.

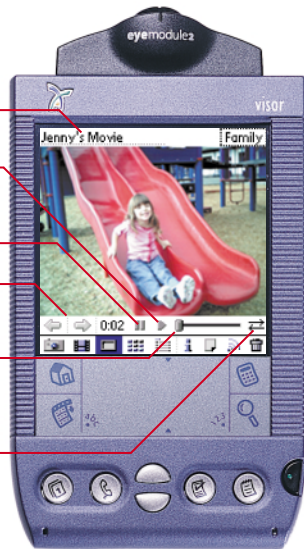
Tap here to play the Mini-Movie. When a Mini-Movie is initially displayed, the first frame will be shown.

Tap here to pause the Mini-Movie.

Tap here to go to the previous or next image or Mini-Movie.

The handle on the progress bar can be dragged with the stylus to move forward or backward within the Mini-Movie. It can also be played in slow motion by tapping and holding on the slider track.

Tap here to turn looping on and off.



slide show

The Slide Show option automatically plays all the images and Mini-Movies in the current View Mode category.

In View Mode, tap on the Visor's Menu icon to access the Options menu. Then select "Slide Show".

Tap the screen (or press the Up or Down button) to stop the slide show and return the Visor handheld to View Mode.



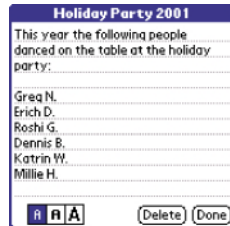
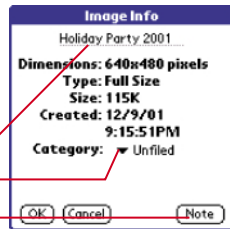
image info/notes

Tapping on the Info icon (i) from the View Mode will open the Image Info screen.

The image name can be edited.

The image category can be changed.

Tap here to attach a note to the image.



thumbnail mode

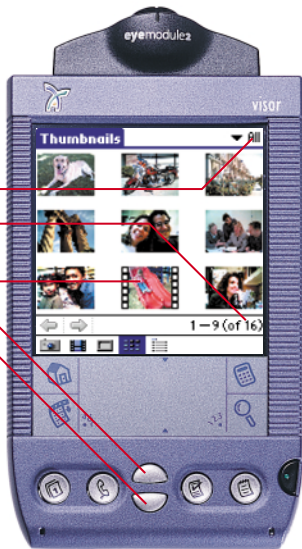
When the Thumbnail Mode icon (🖼️) is selected, the images in the current category are presented as thumbnails. Tapping on a thumbnail opens the item in View Mode.

Tap here to change the category being viewed.

Indicates your location within the set of items you are currently viewing.

Mini-Movies are identified with sprocket holes.

Press the Up or Down buttons to scroll to the previous or next group of images.



list mode

When the List Mode icon (📋) is selected, you will be able to view a list of your images and Mini-Movies and perform batch operations on them.

Tap here to change the category being viewed.

Tap an item name to open it in View Mode.

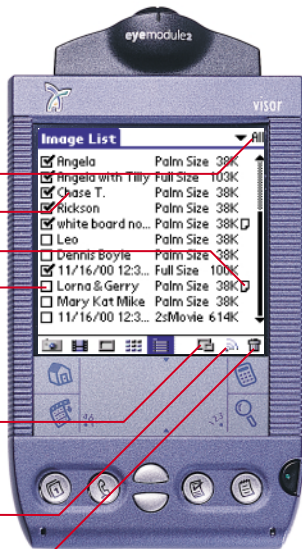
Tap here to view an attached note.

Check boxes allow you to select multiple items. They can then be downsized, beamed, or deleted by tapping the icons on the bottom right. Selected images can be re-categorized by tapping on the Visor's Menu icon and using the "Move Selected Items" function under Options.

Tap here to downsize all selected Full Size images to conserve memory. (Downsizing a Full Size image on a B&W Visor handheld will convert the image to B&W.)

Tap here to beam all selected items (page 18).

Tap here to delete all selected items.



beaming images

Before other PalmOS users can view your images, they must have the eyemodule2 application installed. See your handheld's user guide for instructions on beaming applications. You can also install the application on another Visor handheld by briefly inserting the eyemodule2 digital camera.

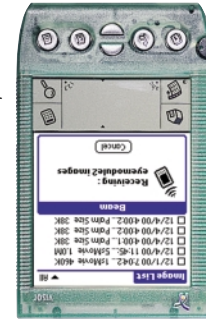
Align the infrared ports as shown on the next page. While in View Mode, tap the Beam icon (📶) to begin transmission. Keep the ports aligned until beaming is complete, or tap **Cancel** to stop the transfer.

Tap here to beam.



You can beam Full Size color images from color to B&W Visor handhelds. The image will be converted to B&W for viewing on the B&W Visor handheld, but will still appear in color when transferred to your computer.

For instructions on beaming multiple images, see page 17.



bringing images to your computer

First, be sure that the Visor HotSync® operation functions properly. Then use the enclosed CD to install the eyemodule2 conduit software on your computer:

1. Locate the enclosed CD and insert it into the computer's CD-ROM drive.
2. The eyemodule2 conduit installer application will launch automatically.
3. Follow the installation instructions.

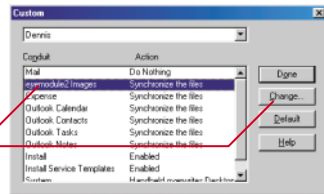
After the conduit is installed, place your handheld in the cradle and push the HotSync button. The eyemodule2 images and Mini-Movies will be transferred to the desktop computer and placed in the folder specified during conduit installation. Mini-Movies will be converted to QuickTime movies, and still images will be saved as JPEG files.



custom settings for advanced users

HotSync custom settings window

To modify the eyemodule2 conduit settings, access the custom settings window from the HotSync Manager or from the Palm Desktop application. Choose the eyemodule2 images conduit, then click Change.

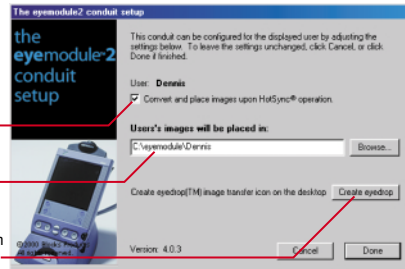


The eyemodule2 conduit setup window

Unchecking this box prevents eyemodule2 images and Mini-Movies from being copied from the Visor handheld to the computer during HotSync operations.

You can change the directory in which your images are placed.

You can create an eyedrop desktop icon for bringing images from your computer to your Visor handheld (page 24).



Note: Appearance between Windows (shown on this page) and Mac will differ.

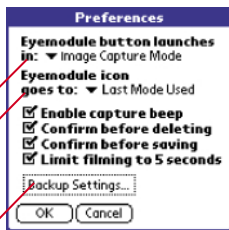
setting preferences

You can customize your settings by tapping the Visor Menu icon and then selecting "Preferences" from the Options menu.

Tap here to change the mode into which the eyemodule2 program will launch when the button on the module is pressed.

Tap here to select the mode into which the eyemodule2 program will launch when the Palm desktop icon is tapped.

Tap here to open the backup settings window. If your handheld's data is lost, you can restore all your backed up images with a HotSync operation (page 20). If this happens, be sure to restore your lost images before capturing new ones.

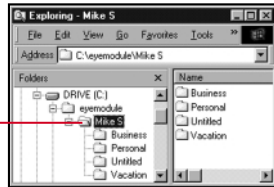


viewing images and mini-movies on your computer

After a HotSync operation, the JPEG files and converted QuickTime movies can be found in the folder named "eyemodule" that is placed in your hard drive's top level during installation. The image files will be arranged in subfolders named after the categories on your handheld.

For your convenience, we have included optional third-party software on the eyemodule2 CD. This will allow you to view, print, and share your image files.

See the enclosed card for instructions on installing and using the included third-party image viewing software. The JPEG image files and converted QuickTime movies can also be viewed on your computer using your Web browser or any other software that views JPEG image files.




Windows® Explorer



Mac® Finder

bringing images to your visor handheld

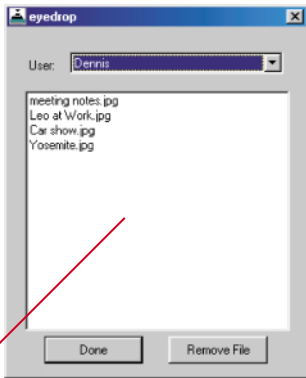
During the conduit installation process, an eyedrop icon will be created on your computer desktop (page 21).

To transfer images to your Visor handheld, drag and drop the image files from your desktop computer onto the eyedrop icon.  eyedrop

Note: To avoid an error, be sure any files that did not originally come from an eyemodule2 digital camera are 640x480 (Full Size) or 160x120 (Palm Size) JPEG files.

Double-clicking the icon opens this window. It lists the files to be transferred. You can also change users or remove files from the list.

The listed files will be transferred during the next HotSync operation.



Note: To bring Mini-Movies back to your Visor handheld, drag and drop the files with the .ido extension (such as mymovie.ido) located in the eyemodule folder onto the eyedrop icon. You cannot transfer QuickTime movies, that were converted during HotSync, back to the Visor handheld.

camera specifications

Camera Features

- Angled design for comfortable, unobtrusive image and movie capturing.
- Easy one-button operation.
- Weighs only one ounce.
- Protective lens cap.
- Fixed focus (18" to infinity).
- f2.8 multi-element lens.
- Two resolutions: Palm Size (160x120 pixels) and Full Size (full VGA, 640x480 pixels) JPEG Format.
- Mini-Movie capture (~8 fps).
- A color Visor handheld with 6 MB free memory can hold:
 - Over 50 Full Size color images or
 - Over 150 Palm Size color images or
 - Over 20 seconds of color Mini-Movies
- A B&W screen Visor handheld with 6 MB free memory can hold:
 - Over 50 Full Size color images or
 - Over 660 Palm Size B&W images or
 - Over 85 seconds of B&W Mini-Movies

Platform Support

- Works with any Springboard compatible devices.
- Full 24-bit color capture and 16-bit color preview on color Handspring Visor handhelds, 16 levels of gray preview on B&W Visor handhelds.

Interaction Features

- Capture images and Mini-Movies on your handheld.
- View images and Mini-Movies as thumbnails, full screen, or in a list.
- Take time-lapse pictures.
- View slide shows on your handheld.
- Name and categorize images and Mini-Movies as you take them.
- Perform batch operations including move and delete.
- Downsize Full Size (full VGA) images to Palm Size right on your handheld.
- Attach notes to images.

Connectivity

- Download images to your desktop computer.
- Mini-Movies are automatically converted into QuickTime movies on your desktop computer.
- Bring eyemodule2 images from your desktop computer to your handheld.
- Beam Palm Size images to other compatible PalmOS devices.

tips & troubleshooting

- For sharper images, hold the Visor handheld as still as possible while capturing. This is especially important in low light situations.
- Make sure the lighting around your subject is adequate. Don't backlight your subject.
- Adjust the screen contrast/brightness level correctly.
- If you want to conserve memory on your Visor handheld, capture Palm Size images, which are 38K. Full Size images are around 130K.
- Expect synchronizing your images to extend your HotSync time. You can minimize this by unchecking the backup settings checkbox under preferences. Synchronizing using a serial cradle is considerably slower than using a USB cradle.
- You can use the Up button to capture images and Mini-Movies, and also to say "Yes" to the "Save Image?" prompt.
- Mini-Movies consume a lot of memory. To save memory, keep your movies short.
- You can use the Up or Capture buttons to start and stop filming.
- By default, the Capture button launches the eyemodule2 program, which is useful when you want to start capturing quickly.

If the eyemodule2 digital camera doesn't work:

- Be sure the eyemodule2 digital camera is fully inserted.
- Be sure the Visor handheld is working properly.
- Check to see that there is sufficient battery life remaining.
- Refer to the Visor handheld user guide for Visor related problems.

For further assistance:

- See the FAQs at www.eyemodule.com
- e-mail support@eyemodule.com
- Call 650-322-1776

limited warranty and product information

Your eyemodule2 digital camera is covered by the following warranty and return policies. The complete Limited Warranty can be found on your CD.

Register Your eyemodule2 Digital Camera: Please register your product with us by visiting our Web site at www.eyemodule.com. You can also find contact information, troubleshooting tips and warranty information on our Web site.

General Repairs: Most problems with your eyemodule2 digital camera can be easily solved with the help of online technical support. Please visit our Web site, www.eyemodule.com, to find answers to frequently asked questions (FAQs). If you still need help, please e-mail questions to support@eyemodule.com, or call Technical Support at 650-322-1776. Opening your eyemodule2 digital camera or making unauthorized repairs may void your warranty. See the complete Limited Warranty for details.

Overview of Limited Warranty: Blocks Products ("Blocks") warrants to the original end user that this product will be free from defects in workmanship and materials, under normal intended use, for one year from the date of original purchase from Blocks. Subject to the terms and conditions of the Limited Warranty, Blocks shall replace the defective product with a comparable product, repair the product, or refund the purchase price paid for the product. The Limited Warranty does not cover any malfunction or damage caused by misuse, neglect, improper installation or testing, unauthorized attempts to open, repair, or modify the product, or any other cause beyond the range of the intended use, by any malfunction in any device to which it is connected, or by accident, fire, lightning, extreme conditions, other hazards, or acts of God. The Limited Warranty also does not cover physical damage to the surface of the product, including cracks or scratches on the lens or outside casing. For details of coverage and exclusions, and the procedures for obtaining warranty service, see the complete Limited Warranty on the CD or on our Web site.

Unit Damaged In Shipping: If your product was damaged during shipment, please contact the place of purchase.

Note: This equipment has been tested and found to comply with the limits for a Class B digital device, pursuant to part 15 of the FCC.

FCC Rules: These limits are designed to provide reasonable protection against harmful interference in a residential installation.

This equipment generates, uses and can radiate radio frequency energy and, if not installed and used in accordance with the instructions, may cause harmful interference to radio communications. However, there is no guarantee that interference will not occur in a particular installation. If this equipment does cause harmful interference to radio or television reception, which can be determined by turning the equipment off and on, the user is encouraged to try to correct the interference by one or more of the following measures:

- Re-orient or relocate the receiving antenna.
- Increase the separation between the equipment and receiver.
- Connect the equipment into an outlet on a circuit different from that to which the receiver is connected.
- Consult the dealer or an experienced radio/TV technician for help.

www.eyemodule.com

Design by IDEO is a trademark of IDEO Product Development. Handspring, Springboard, Visor, and the Handspring and Springboard logos are trademarks or registered trademarks of Handspring, Inc. eyemodule is a trademark of Blocks Products. PalmOS, Graffiti, and HotSync are registered trademarks of Palm Computing, Inc. Windows is a registered trademark of Microsoft Corporation. Mac is a registered trademark of Apple Computer, Inc. QuickTime and the QuickTime logo are trademarks used under license. Other product and brand names may be trademarks or registered trademarks of their respective owners. Copyright © 2000 Blocks Products.